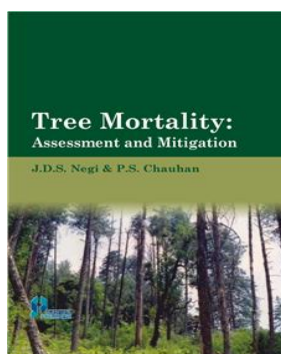


## Tree Mortality Assessment and Mitigation



**J.D.S. Negi & P.S. Chauhan**

ISBN	: 9789390495535	Book Format	: Book
		Binding	: Paper Back
Language	: English	Edition	: 1
Imprint	: Scientific Publishers	© Year	: 2021
Pages	: 142	Trim Size	:
Weight	: 320 Gms		

**Print Book** : ~~₹750.00~~ **₹675.00** 10%Off

### Blurb

The present book deals with the forest health in general and tree mortality in particular. It is a well-known fact that death of the trees is inevitable but when tree mortality interferes with poor health and productivity of the forest, then it certainly becomes a serious concern. Since the year 1990 each and every forest of the country was observed thoroughly and examined very closely for its health in general and productive capacity to cope with the climate change and carbon mitigation in particular. This will help in the management of disturbed and degraded forests. In this book the questions related to tree mortality are examined with particular reference to Sal and Shisham mortality along with broad-leaved conifers and tree species in captivity. Primary and secondary causes have been established and then their mitigating measures have been suggested. It is expected that the book will be useful for researchers, foresters and field foresters vis-a-vis Botany and Forestry students alike in their intent to study tree mortality.

### Table of Contents

1. Introduction and historical review
  - 1.1. Introduction
  - 1.2. Historical review
  - 1.3. References
2. Concept of tree mortality
  - 2.1. Introduction
  - 2.2. Factors causing tree mortality
  - 2.3. Mechanism of mortality of tree mortality
  - 2.4. Role of foliage nutrient concentration in tree mortality
  - 2.5. Soil - physicochemical properties as an indicator of mortality
3. Mortality in *Shorea robusta* Gaertn. f. (Sal)
  - 3.1. Introduction
  - 3.2. Chronology of mortality
  - 3.3. Primary factors (causes) and extent of mortality
  - 3.4. Control measures
4. Mortality in *Dalbergia sissoo* Roxb. (Shisham)
  - 4.1. Introduction
  - 4.2. Status and primary causes of mortality
  - 4.3. Chronology of mortality
  - 4.4. Indicators of mortality
  - 4.5. Earlier observations
  - 4.6. Conclusions
  - 4.7. Control measures
5. Mortality in broad-leaved trees and conifers
  - 5.1. Broad-leaved trees
  - 5.2. Conifers
  - 5.3. Control measures
6. Mortality in captivity
  - 6.1. Introduction
  - 6.2. Observations
7. Assessment, Monitoring and Mitigation

This is computer generated document and does not require signature